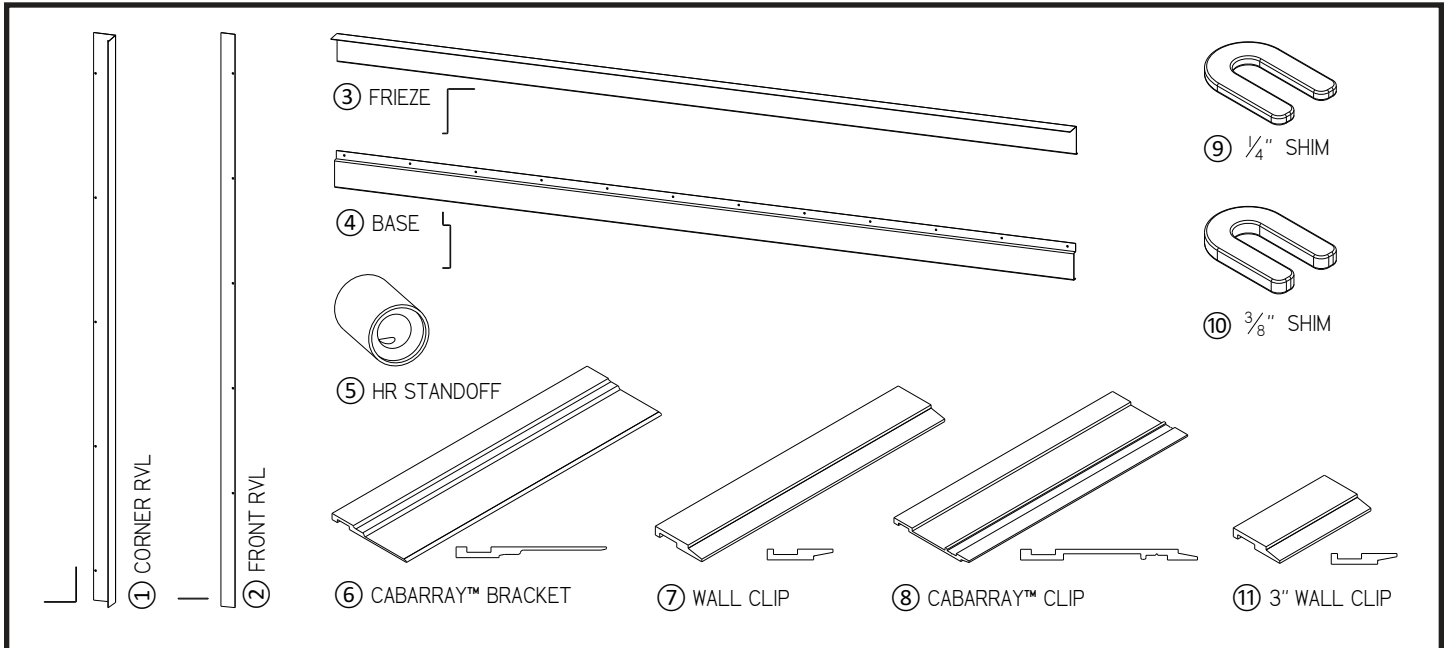
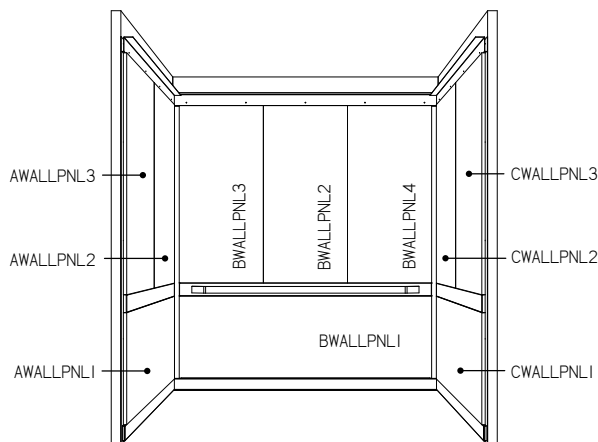


CabArray™ Stage Installation Guide v4.0

Assembly Components



Installation Sequence



1. Front corner reveals
2. BWall base
3. A and C wall base
4. BWall clips
5. A and C wall clips
6. BWall panels (bottom to top)
7. BWall corner reveals
8. BWall frieze
9. A and C wall panels (bottom to top)
10. Handrail (if applicable)
11. Ceiling assembly (if applicable)

Important Reminders

- Refer to project drawings for accurate measurements and configurations
- Be mindful of cab squareness and make necessary adjustments
- Regularly check alignment and secure fitting throughout installation process

Safety First

Ensure all safety protocols are followed during installation, particularly when working with electrical components and at heights. We always recommend using International Union of Elevator Constructors for your elevator projects.

Preparation

Hoistway Interference

Confirm no objects will be damaged with use of drills, cutting tools, or fasteners through the cabshell wall.

Installation Kits

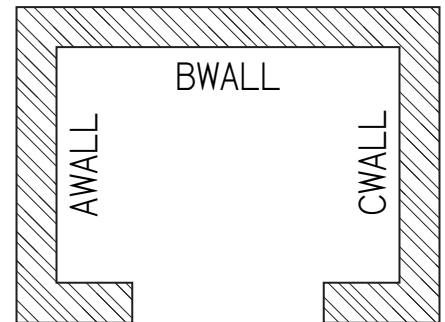
Hardware for installation in standard metal or wood cabshells is provided - not for all conceivable installation circumstances. Our goal is to make installations as seamless as possible, if there is something we can do to help, please let us know!

Preparatory Videos

CabArray™ Stage Installation

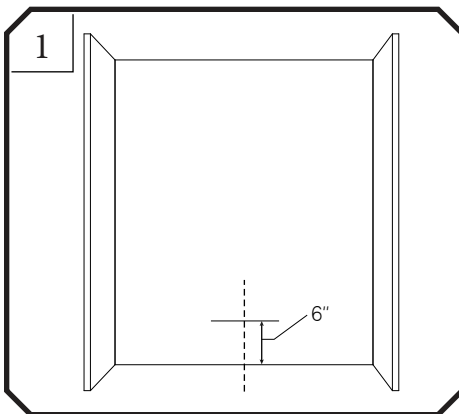
Wall Labeling

CabArray™ follows an ABC labeling system for wall panel installation



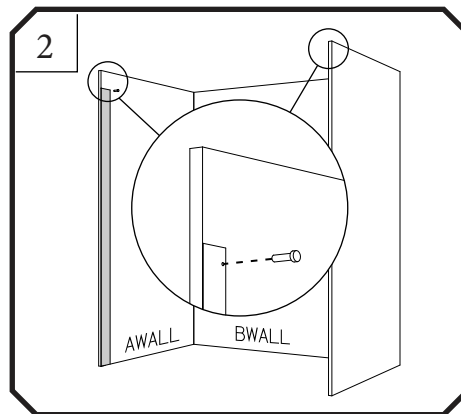
Installation Instructions

NOTE: Ensure ventilation slots are behind the base location. If not, drill or cut holes following ASME 17.1 code



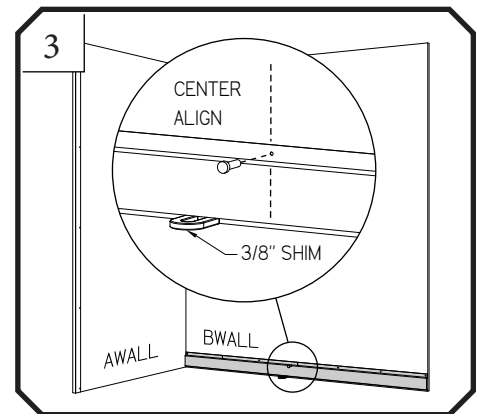
Measure and Mark

- Find BWALL center point and mark near the bottom about 6" AFF (Above Finish Floor)
- Cabshell walls can be bowed or damaged, causing installation problems as panels interlock. Identify dents or bows with a level and mark the depth. Insert shims as needed.



Front Corner Reveals

- Install AWALL and CWALL front corner reveals ②
- Clean and prepare wall for use of adhesives (not required but may eliminate vibrations)
- Attach reveals to cabshell walls with fasteners



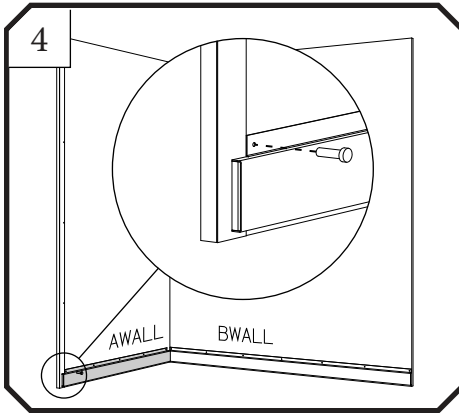
Attach Backwall Base

- BWALL BASE ④ must be installed first, before other bases, clips or panels**
- Ensuring base is placed accurately AFF, plumb and level is critical to remaining installation**

- Place 3/8-inch air gap shim ⑩ on finished floor or even with top of the sill
- Place BWALL BASE on top of shim, center align with BWALL and attach

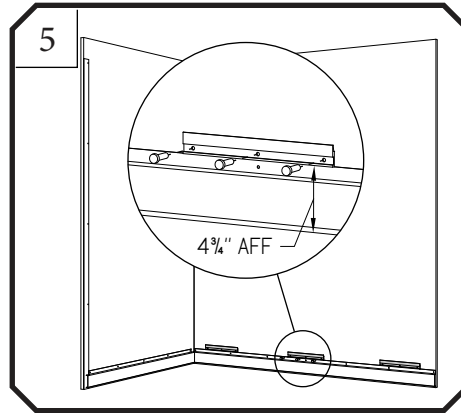
NOTE: If cabshell is bowed, shim CabArray™ clips to stop rattling and ensure proper panel alignment

NOTE: Out of square cabs can cause spacing issues. Installing a shim behind backwall base can close gaps to ensure a high quality installation.



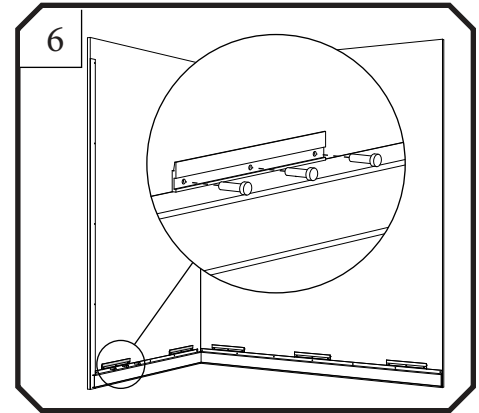
Attach Sidewall Bases

- Repeat for AWALL BASE and CWALL BASE
- Press against sidewall and slide towards backwall base



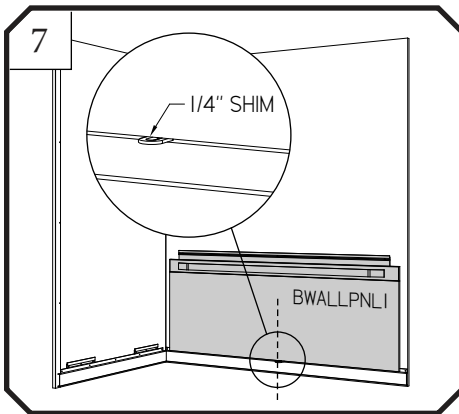
Install Backwall Clips

- Place wall clip ⑦ directly on top of CabArray™ base ④ ledge
- Center align clip with BWALL and fasten to the cabshell. The number of wall clips is determined by panel design and shown on provided drawings.



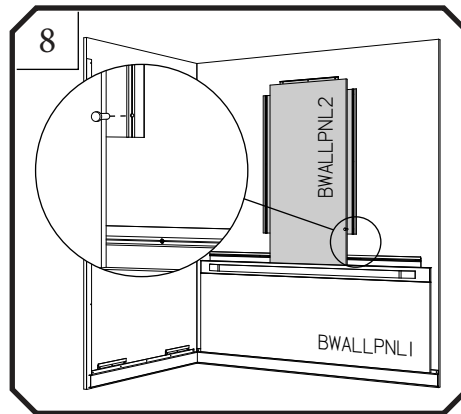
Install Sidewall Clips

- Follow the same procedure for sidewall clips according to provided project drawings



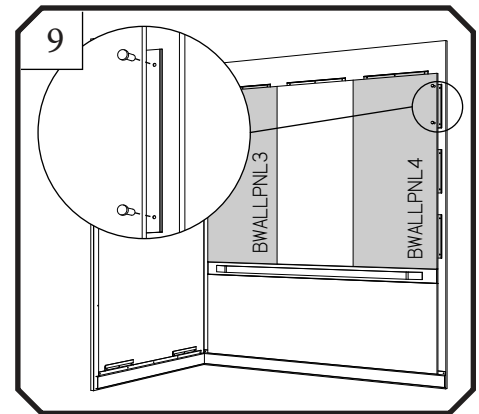
Backwall Lower Panel

- Slide BWALLPNL1 down, engaging bottom row panel clips with wall clips
- Use 1/4\" shim ⑨ to maintain 1/4\" gap between top of base and bottom of panel
- Center panel along the backwall
- Attach the CabArray™ clip along top of the panel to cabshell



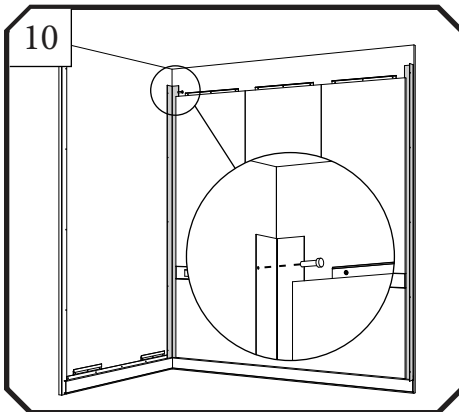
Upper Center Backwall Panel

- Slide BWALLPNL2 down engaging bottom row of panel clips with the CabArray™ clip that extends up from BWALLPNL1
- Ensure panel is centered along backwall
- Attach the CabArray™ bracket along top of the panel to cabshell



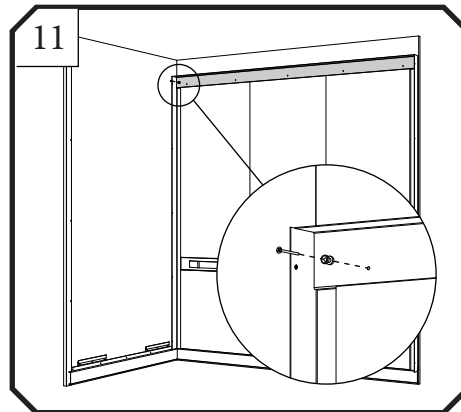
Backwall Flanking Panels

- Slide BWALLPNL3 down until bottom clips engage
- Push panel toward BWALLPNL2 to engage side mount clips
- Attach the CabArray™ clip along opposite side and top of panel to cabshell



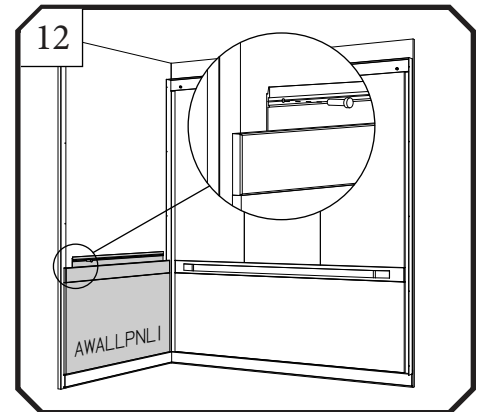
Backwall Corner Reveals

- Install L-shaped corner reveals ①
- Tuck reveal behind backwall panels and attach to sidewalls using fasteners



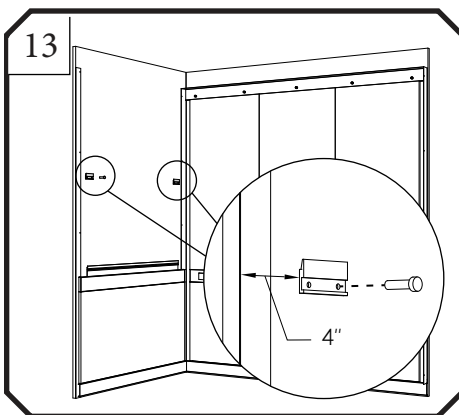
Backwall Frieze

- Install BWALL frieze ③ prior to all side panels
- Rest BWALL frieze on top of backwall panel and secure using decorative screws through pad studs
- Pad studs can be attached using thru-bolts, threaded inserts, or self-tapping screws as appropriate for specific project conditions



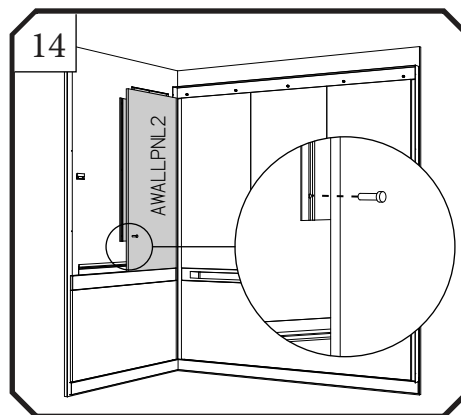
Sidewall Lower Panel

- Slide AWALLPNL1 down engaging bottom row of panel clips with wall clip
- Use 1/4" shim ⑨ to maintain a gap between top of base and bottom of panel
- Attach CabArray™ clip along top of the panel to cabshell



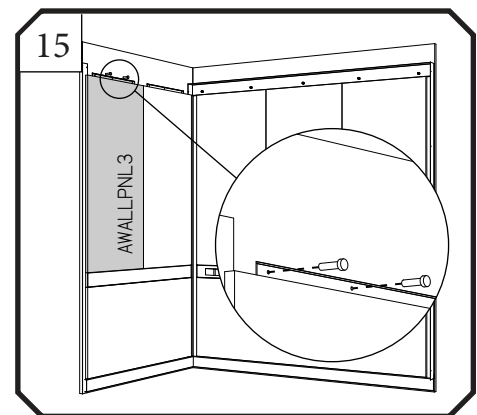
Attach Sidewall Clips

- Place clip jig on top of handrail panel and align outside edge with outer edge of the handrail panel
- Attach 3" wall clip ⑪ 4" from front wall
- Repeat for backwall corner clip



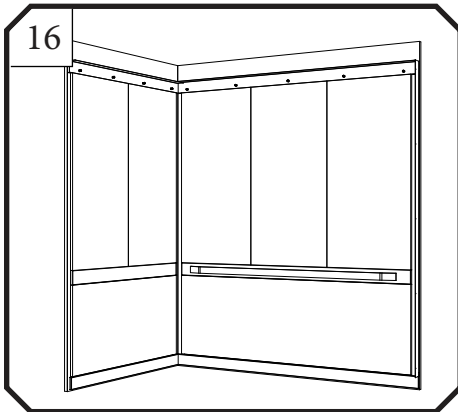
Upper Sidewall Back Corner Panels

- Slide AWALLPNL2 down engaging bottom row of panel clips with CabArray™ clip that extends up from AWALLPNL1
- Push panel toward back corner and align outer edge with AWALLPNL1 below
- Secure panel by attaching CabArray™ top brackets to cabshell



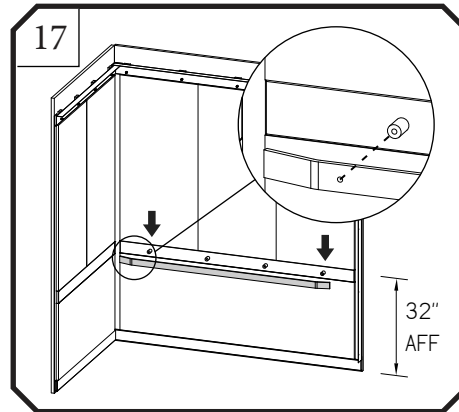
Secure Upper Sidewall Front Panels

- Slide AWALLPNL3 down engaging with CabArray™ clip extending out from the top of AWALLPNL1
- Slide panel along the wall aligning its front edge with AWALLPNL1 below
- Attach the panel to cabshell using CabArray™ panel brackets along the top



Sidewall Frieze

- Rest AWALL frieze on top of sidewall panels and secure using decorative screws through the pad studs
- Frieze may need to be slid slightly forward or backward to account for an out of square cab



Handrail / Kickrail Installation

- Stage handrails are typically shipped attached to the panels
- Typical handrail height is 32" AFF (above finished floor) to top of handrail - confirm height with project drawings

- **Handrails must be attached to shell wall by removing the two standoffs at either end**
- **Once panels are installed remove ALL handrails by loosening the set screws on the standoffs and remove the standoffs on either end of every handrail from the wall panels**
- **Run a pilot bit through the panel and the cabshell wall (make sure there is nothing behind the shell wall at these locations)**
- **Attach the standoff back through the panel and into the cabshell with fasteners, set screw pointing down when tightening**
- **Slide handrails into standoffs and secure set screws**